

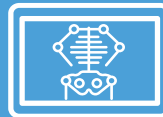


2703LM 27-inch LCD

Medical Grade
Touchscreen Monitor



**IEC60601-1 4th edition &
IP54 Compliant**



**DICOM 14 - Designed for
Consistent Image Review**



**Enhance Clinical Workflow
with Integrated 10-touch**

Product Overview

The Elo 2703LM 27-inch Medical Grade Touchscreen Monitor merges best-in-class touchscreen technology with DICOM Part 14 functionality to help enhance clinical review for healthcare providers while increasing patient engagement. With a compact form factor and clean design, the touchscreen monitors are well-suited for EMR documentation, image viewing, clinical collaboration, deployment within the laboratory and pharmacy and for integration into medical devices. Purpose-built for healthcare, the 03-Series medical monitors comply with IEC60601-1 4th edition requirements and are IP54 certified to support healthcare environments.

**Available in 19-inch square and 22-inch,
24-inch & 27-inch widescreen displays
creating a seamless style across a variety**

**Touchscreen is compatible with use of
finger, glove and stylus**

**Multiple accessory and mounting
options**

- Stand, Wall & Pole Mounts
- Handles
- Privacy Filters
- Elo Edge Connect peripherals

2703LM 27-inch Medical Grade Touchscreen Monitor

Specifications	
Color	Black or White
Diagonal Size	27" / 685.8 mm
Active Touch Area	23.54" x 13.24" / 597.88 mm x 336.31 mm
LCD Technology	Active matrix TFT LCD
Touch Technology	TouchPro PCAP
Number of Touches	10 Touches
Aspect Ratio	16:9
Native Resolution	1920 x 1080
Preset Video Timings	640 x 480 60Hz, 640 x 400 70Hz, 720 x 400 70Hz, 800 x 500 60Hz, 800 x 600 56, 60Hz, 1024 x 768 60Hz, 1280 x 720 @ 58Hz, 60Hz, 1280 x 800 60Hz, 1280 x 1024 60Hz,1366 x 768 60Hz, 60Hz RB, 1440 x 900 60Hz, 60Hz RB, 1680 x 1050 60Hz, 60Hz RB, 1920 x 1080 50 60Hz
Number of Colors	16.7M
Brightness (typical)	Panel: 300 nits; with TouchPro PCAP: 270 nits
Response Time (Tr + Tf) (typical)	14 msec
Viewing Angle (typical)	Horizontal: 89°/89° or 178° total; Vertical: 89°/89° or 178° total
Contrast Ratio (typical)	1000:1
On-Screen Display (OSD)	Accessible through switches along the bottom. Controls: Menu, Power, Up, Down, Select Settings: Brightness, Contrast, Clock, Phase, H-position, V-position, Auto-Adjust, Aspect Ratio, Sharpness, Color Temperature, OSD Timeout, OSD Language, Volume, Mute, Recall Defaults, Audio Select, Power LED ON/OFF, Touch Thru, Touch Interface, DICOM Languages: English, French, Italian, German, Spanish, Simplified Chinese, Traditional Chinese, Japanese, Russian, Korean Lockouts: OSD, Power
I/O Ports	VGA (RS232 touch supported via E810917), HDMI, Combo Jack, DC Jack, USB Type B, USB 2.0 Type A, 4 x Micro USB
Peripheral Ports	4 x Micro USB side ports (Top, Bottom, Left, Right)
Video	VGA (VGA DE-15 (DB-15) Male connector cable included), HDMI (HDMI cable included) Input Video Horizontal Sync frequency range: 30 - 82KHz, Input Video Vertical Sync (frame rate) frequency range: 50 - 75Hz
Speakers	2 x 2W internal speakers
Power	Monitor input power connector: Coaxial power jack (2.1 mm pin outer diameter, 6.4mm barrel inner diameter); Monitor input power signal specifications: 12VDC +/- 5%; Adapter input voltage range: 100-240VAC, 50/60Hz; Power Consumption - Monitor + AC/DC adapter: ON (Default - 75% Brightness): 17.37 W; ON (Typical - 100% Brightness): 22.41 W; SLEEP: 1.006 W; OFF: 0.24 W
Dimensions (H x W x D)	w/ stand: 17.75" x 25.50" x 9.17" / 450.9 mm x 647.6 mm x 233 mm; w/o stand: 15.52" x 25.50" x 1.77" / 394.1 mm x 647.6 mm x 44.9 mm
Shipping Dimensions (H x W x D)	w/ stand: 22.05" x 30.08" x 12.68" / 560 mm x 764 mm x 322 mm; w/o stand: 20.47" x 30.31" x 7.36" / 520 mm x 770 mm x 187 mm
Weight	Unpackaged - w/ stand: 22.64 lbs /10.27 kg, w/o stand: 15.72 lbs / 7.13 kg; Packaged - w/ stand: 31.48 lbs / 14.28 kg, w/o stand: 22.95 lbs / 10.41 kg
Mounting Options	VESA 4-hole 100mm mounting interface on rear of unit
Temperature	Operating: 0° C to 40° C / 32°F to 104°F / Storage: -20° C to 60° C / -4°F to 140°F
Humidity (non-condensing)	Operating: 20% - 80% / Storage: 10% - 95% (38.7° maximum wet bulb temperature)
Regulatory approvals and declarations	Canada CUL, IC; China CCC; Europe CE; United Kingdom UKCA; Korea KCC; Taiwan BSMI; United States FCC, UL; Japan VCCI; International CB; Australia RCM; Russia EAC; Mexico CoC; RoHS, China RoHS, WEEE, REACH; India BIS
Healthcare Safety Standards	ANSI/AAMI ES60601-1 (2005)/(R)2012 + A1:2012, C1:2009/(R)2012 + A2:2010/(R)2012) - Amendment 1 - Revision Date 2012/08/21; CAN/CSA-C22.2 No. 60601-1:14 - Edition 3 - Revision Date 2014/03 CB: IEC 60601-1:2005, IEC 60601-1:2005/AMD1:2012, IEC 60601-1:2005/AMD:2020 (Ed 3.2) CE: IEC 60601-1-2:2014 (Ed. 4) Risk Management: ISO 14971:2019 Usability: IEC 60601-1-6:2010/AMD2:2020, IEC 62366:2017
DICOM	DICOM Part 14 (AAPM secondary display)
Ingress Protection	IP54 entire enclosure
Impact Protection	IK06
Warranty	3 years
Extended Warranty Option	4 year - Elo P/N: E898247; 5 year - Elo P/N: E898449; 3 year + AUR - Elo P/N: E898648; 4 year + AUR - Elo P/N: E894921; 5 year + AUR - Elo P/N: E895125
MTBF	50,000 hours demonstrated
What's in the Box	Touchmonitor, Quick Install Guide, 3x Tie wraps, VGA cable, HDMI cable, Touch USB cable, Audio cable, Power brick (E323104), NA Power cable, EU Power cable, EEI Label, DICOM calibration sheet, 2x cable cover screws, 4x VESA screws & 4x rubbers (for E381654/E381844 only, affix to VESA holes)

Medical and Healthcare Application Disclaimer: It is the sole responsibility of any person intending to commercialize, market or use any of Elo Touch Solutions, Inc. or its family of companies (“Elo”) products for medical or healthcare applications to ensure that such product is adequate and appropriate for the person’s intended use and complies with all applicable laws, regulations, codes and standards including but not limited to the European Union Medical Device Directive, United States Federal Food, Drug, and Cosmetic Act, regulations of the United States Food and Drug Administration (FDA), and other similar legislation in jurisdictions around the world, and for obtaining and maintaining any required regulatory approvals including but not limited to any required market clearances. Elo has not sought nor received any rulings from the FDA or any other federal, state, or local government agency or notified body as to the safety, effectiveness or appropriateness of its product for such applications. Persons intending to evaluate or use Elo’s product(s) for medical or healthcare purposes must rely on their own medical and legal judgment without any representation on the part of Elo.

Ordering Information

Part Number	Technology	Surface Treatment	Touch Interface	Color	Mount
E659596	TouchPro PCAP	Anti-glare	USB, Serial (via VGA)	Black	Stand
E659793	TouchPro PCAP	Anti-glare	USB, Serial (via VGA)	White	Stand
E381654	TouchPro PCAP	Anti-glare	USB, Serial (via VGA)	Black	No Stand
E381844	TouchPro PCAP	Anti-glare	USB, Serial (via VGA)	White	No Stand

Learn more about Elo at [EloTouch.com](https://www.elotouch.com).

Americas

Tel +1 408 597 8000
elosales.na@elotouch.com

Europe (EMEA)

Tel +32 16 930 136
EMEA.Sales@elotouch.com

Asia Pacific

Tel +86 (21) 3329 1385
www.elotouch.com.cn

Elo reserves the right to change or update, without notice, any information contained herein; to change, without notice, the design, construction, materials, processing or specifications of any products; and to discontinue or limit production or distribution of any products. Elo, the Elo logo and TouchPro are either trademarks or registered trademarks of Elo Touch Solutions, Inc. All other trademarks are the property of their respective owners.
© 2024 Elo Touch Solutions, Inc. All rights reserved. 24121AE500100

